



a gravity separator

Target Pollutants

Free oil, floatables

Settleable solids

Metals

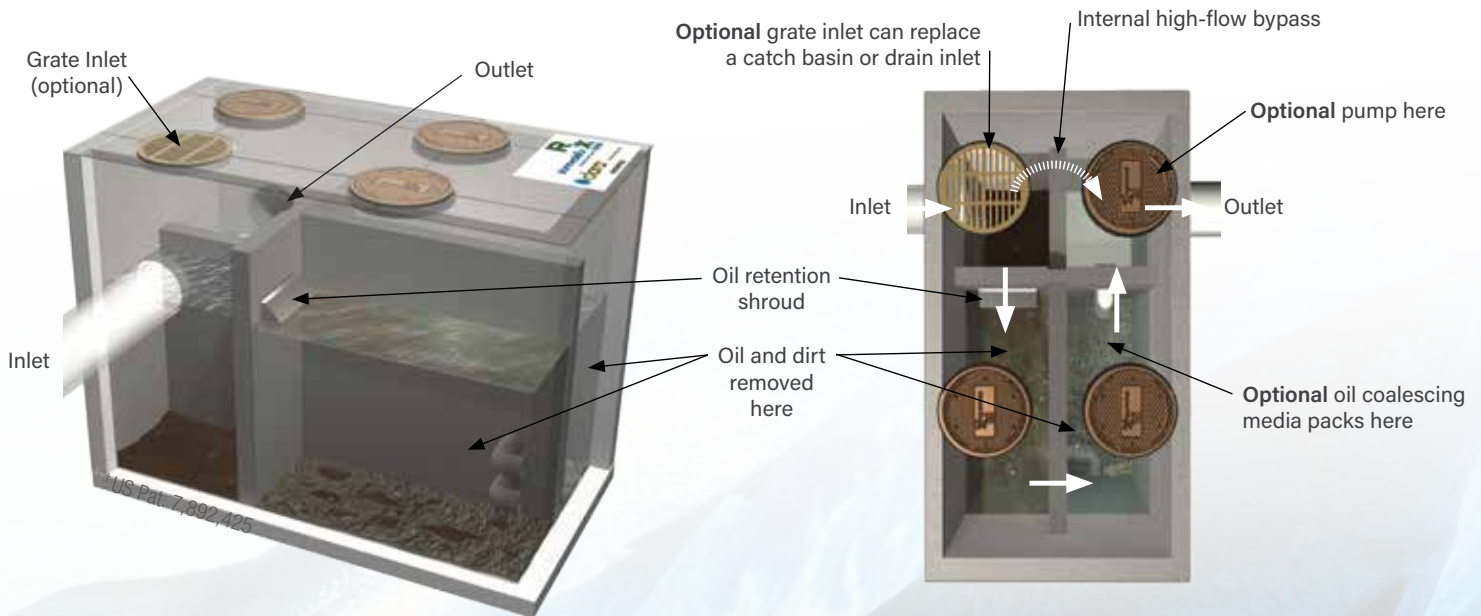
Clara (klar-uh) is a patented<sup>†</sup> oil-water-grit separator for stormwater that can be used as standalone treatment or in a treatment train configuration. Clara removes dirt, oil and floatables by gravity separation. With the built-in internal high flow bypass, pollutants are trapped in this below ground structure even during peak runoff events. Clara is recommended when suspended solids concentrations are greater than 200 mg/L and oil is greater than 10 mg/L.

- Traps pollutants within the system; no washout
- Treatment flow rates of up to 2700 gpm
- Oil storage capacity of up to 1500 gallons
- Available with integrated pump package for downstream treatment
- Sediment storage capacity of up to 10 cubic yards

Clara Model	Treatment Rate (gpm)	Sizing Guideline (acres)*	Buried Footprint (ft x ft)**	Sediment Storage (cy)	Oil/Floatable Storage (gal)
25	320	< 2	7 x 9	1.8	185
40	540	2 - 5	7 x 13	3.0	310
70	900	4 - 8	8 x 16	5.0	510
90	1120	5 - 10	9 x 17	6.4	650
110	1400	7 - 12	11 x 17	8.0	820
210	2700	13 - 23	11 x 28	10.0	1500

\* Varies by region \*\*Typical depth range from 9 to 12 feet

- Available with integrated pump package for downstream treatment
- Coalescing media inserts available for highest oil removal efficiency



StormwaterRx LLC designs, manufactures, installs and maintains stormwater treatment systems for industrial customers throughout North America. Contact StormwaterRx to find out how we can help you meet your stormwater quality requirements.



Call toll free 800.680.3543 or visit [stormwaterx.com](http://stormwaterx.com)



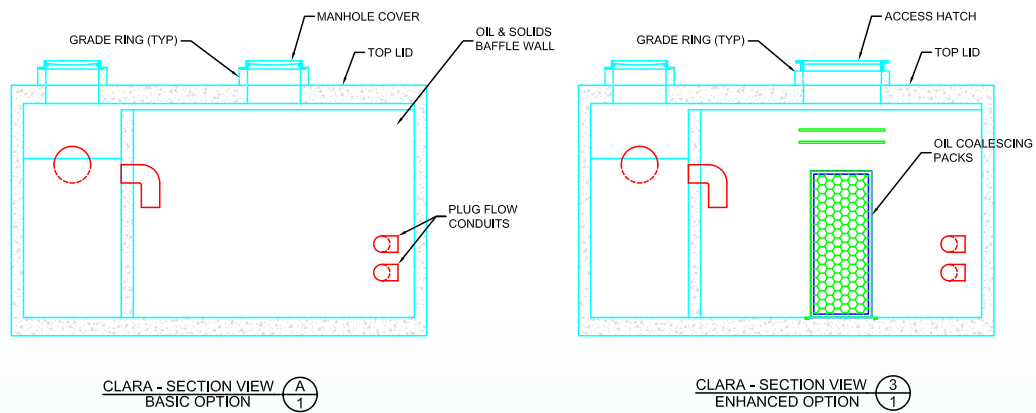
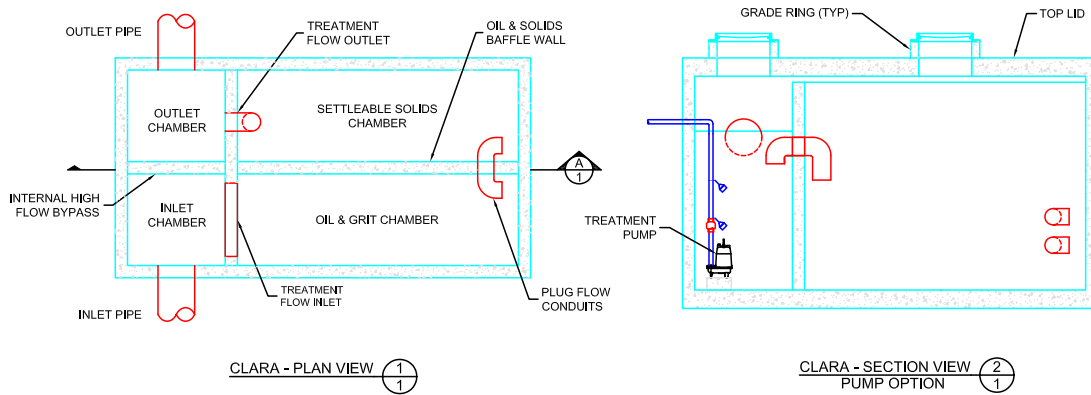
Clara CP pump station option



Clara 40C



Clara CO oil coalescing media option



Clara 25C with grate inlet



Oil trapped inside Clara



Clara maintenance manhole